

ANGELA ALVES

PRODUCTIONS 2019-2023

SOFT OFFER (2019)

The solo production was created in cooperation with the Sophiensaele as part of the Tanztage 2019 and is an evening-length performance about diverse bodies in performative settings. The performance is based on the experience of a physical, emotional and mental transformation of a body of technical dance expertise to an unavailable and unpredictable body with which the dancer is now exploring a new self-image as a disabled artist and staging it artistically and choreographically for SOFT OFFER.

PERFORMANCE, CONCEPT, CHOREOGRAPHY, SET DESIGN, COSTUMES Angela Alves
DRAMATURGY Alex Hennig SOUND DESIGN Nicolas Mavridis



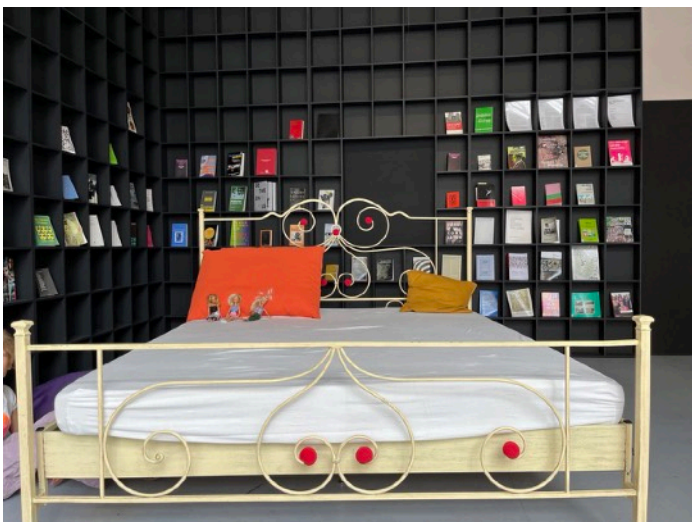
watch the trailer: [click here](#)

REST (2019)

The sound installation comes with a telling bed. Angela Alves invited three women from three different backgrounds into her bed to talk about their relation to rest.

The bed-in recordings provide various mind material and create an archive of voices, that otherwise wouldn't be heard. Voices that become political wordings as soon as they leave the private sphere and go public. Stories of struggling, coping, resisting. Stories of celebrating, loving, creating. Captured in a sound installation, liberated inside the mattresses, hearable by lying in bed and surrendering to the horizontal. With or without Angelas body, depending on her availability.

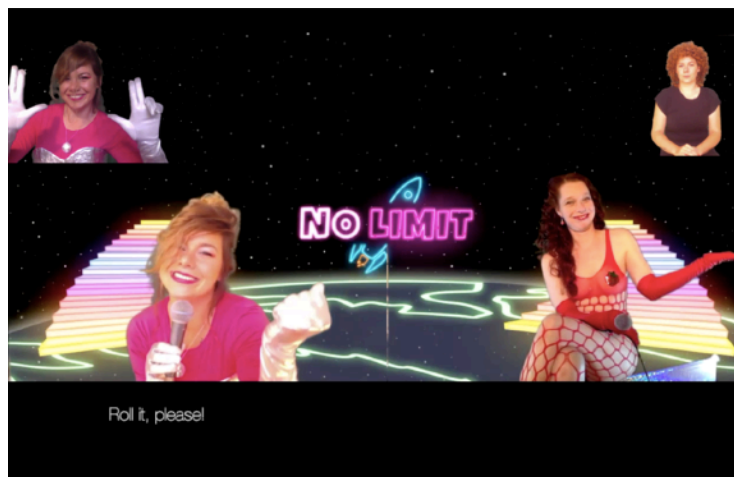
CONCEPT and PERFORMANCE Angela Alves



NO LIMIT (2020)

The remote performance NO LIMIT premiered in 2020 in cooperation with Sophiensaele and Schaubühne Lindenfels. A live television format in a world in which disability sets the norm. With Covid19 the experience of limitation seeps into the collective body of society. Created during the first lockdown, NO LIMIT makes a suggestion to which norm we actually want to return afterwards. In the NO LIMIT world, accessibility and crip time are taken for granted, while neoliberalist behaviour is perceived as an inspiring special need that deserves to be pitied in a charity show.

PERFORMANCE Angela Alves, Simone Detig (audio description), Athena Lange (Sign Language), Gal Naor (Sign Language Relay), Christoph Rothmeier
CONCEPT, CHOREOGRAPHY, COSTUMES Angela Alves
DRAMATURGY Alex Hennig
SET DESIGN Philippe Krueger
SOUND Christoph Rothmeier
PRODUCTION ehrliche arbeit – freies Produktionsbüro



watch the trailer: [click here](#)

TENNIS (2022)

In the setting of a tennis court, Angela Alves takes up the racket and gets ready to serve for an accessible future! Tennis examines sport, art and society for ableist and classist patterns of discrimination and explores methods to counter them without losing her nerve: A humorous choreography of claiming and serving.

In the setting of a tennis court, the dancer takes up the racket and prepares to serve for a barrier-free future. For the crip artist from a so-called underclass background, the tennis court marks a space that was never intended for Angela Alves. In TENNIS, she claims the court for herself, making it her site for gentle self-empowerment.

A ball-throwing machine fires balls into the court. The performer Athena Lange is enthroned on the high seat, controlling the space as a referee, with the tennis coach on the screen in the background. But how does one hold one's own in a demanding game when stress avoidance is the top priority? And how does one escape a social system that knows no boundaries without admitting defeat?

For the performance, Angela Alves studies the serve, forehand and backhand, and tirelessly practices the movements of the game with relish; finding a way to creatively adapt them to her needs. The result is a humorous choreography of sensitive resilience, which, via audio description, sign language and English subtitles, specifically ensnares numerous players in the hurdles of accessibility.

PERFORMANCE Angela Alves, Athena Lange, Emmilou Rößling
CONCEPT AND CHOREOGRAPHY Angela Alves
DRAMATURGY Alex Hennig
ARTISTIC ASSISTANCE AND ACCESS TO WORK Michel Wagenschütz
SETTING AND COSTUME Mascha Denke
FILM Michelle Ettlin
SOUND Christoph Rothmeier
LIGHT DESIGN Susana Alonso
TENNISCOACH Ozan Filiz
THIRD EYE Ania Nowak
PHILOSOPHICAL ADVICE Svenja Flaßpöhler
MEDICAL ADVICE Sabine Schadow
ACCESS TO WORK Oya Ataman
PRODUCTION ehrliche arbeit – freies Produktionsbüro





watch the trailer: [click here](#)

REST REBELLION (2023)

REST REBELLION creates an installation and a training camp. While the installation sets up a calm and low-stimulus space for rest in the midst of the festival business, the training camp offers practices for those who want to learn more about the resistive quality of resting.

The project arises from the refusal of squeezing the body out for capitalism – a system owing a huge debt to sick and disabled folks, and not stopping to reward exploitative and destructive behavior. Angela Alves creates a collective rest & resistance situation in order to dive deep into the power of quitting and embody a rebellious rest practice beyond self-care.

REST REBELLION is one of the last events under the current artistic direction before Sophiensaele goes on summer break and hopefully takes a deep breath.

Angela Alves has decided to offer the Sophiensaele team and audience something that specifically addresses the gap between endings and beginnings, and to share a practice that aims to honor these spaces in between and let them flourish as spaces of rebellion.

CONCEPT Angela Alves PERFORMANCE Angela Alves and Jan Sell DRAMATURGY Agnieszka Habraschka SIGN LANGUAGE RELAY Oya Ataman LIGHT DESIGN Gustav Kleinschmidt TECHNIC Walter Freitag



